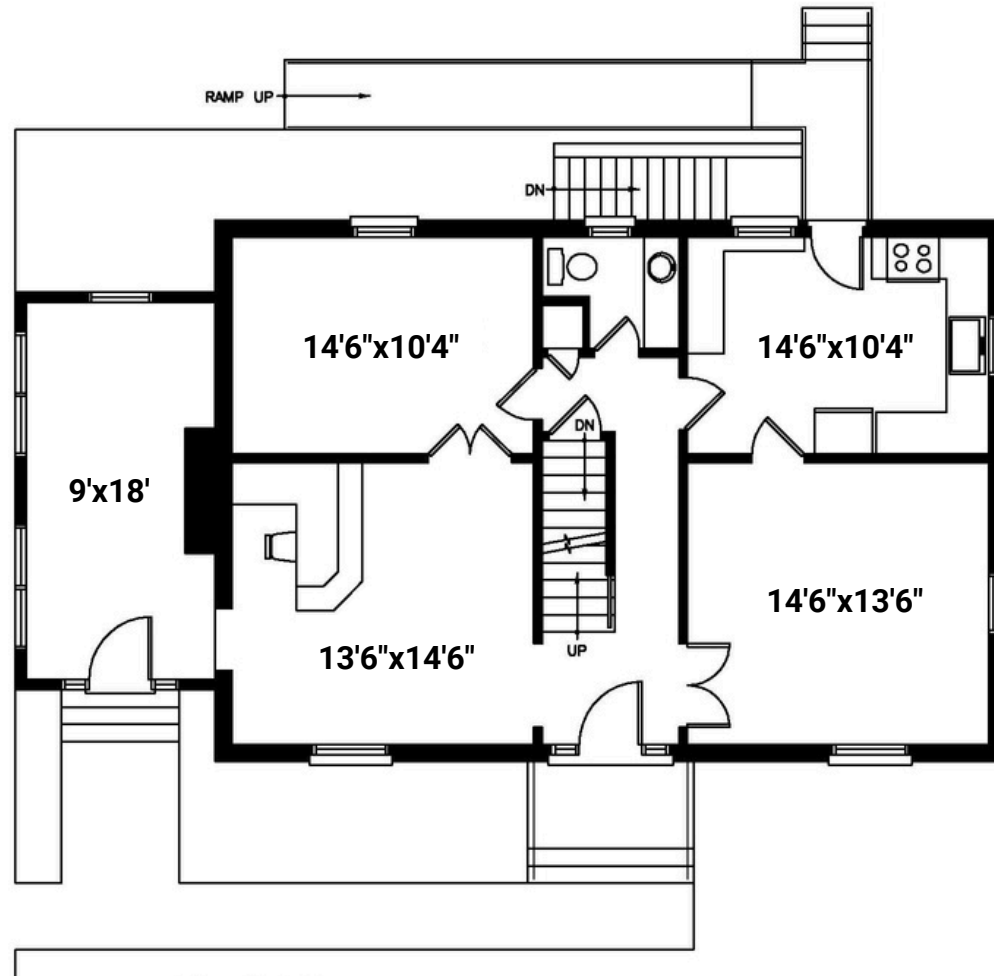


**ON-SITE  
PARKING**



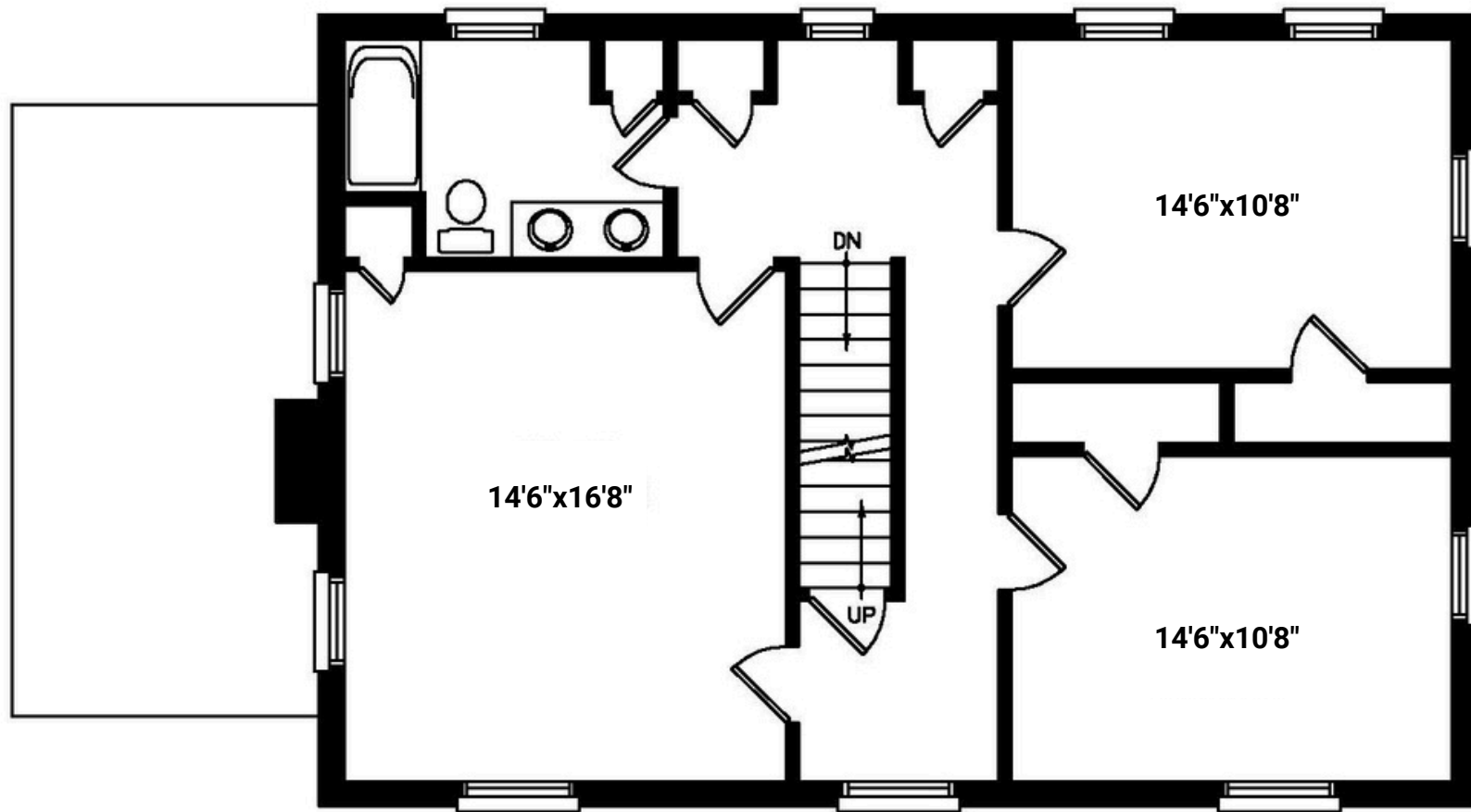
Note: Drawing is not to scale and for illustration purposes only - dimensions are approximate

**FIRST FLOOR**

614 & 612 W Patrick St  
Frederick, Maryland

FIRST FLOOR	=	1,170 SQ.FT.
SECOND FLOOR	=	985 SQ.FT.
THIRD FLOOR	=	605 SQ.FT.
BASEMENT	=	960 SQ.FT.
<b>TOTAL</b>	<b>=</b>	<b>3,720 SQ.FT.</b>





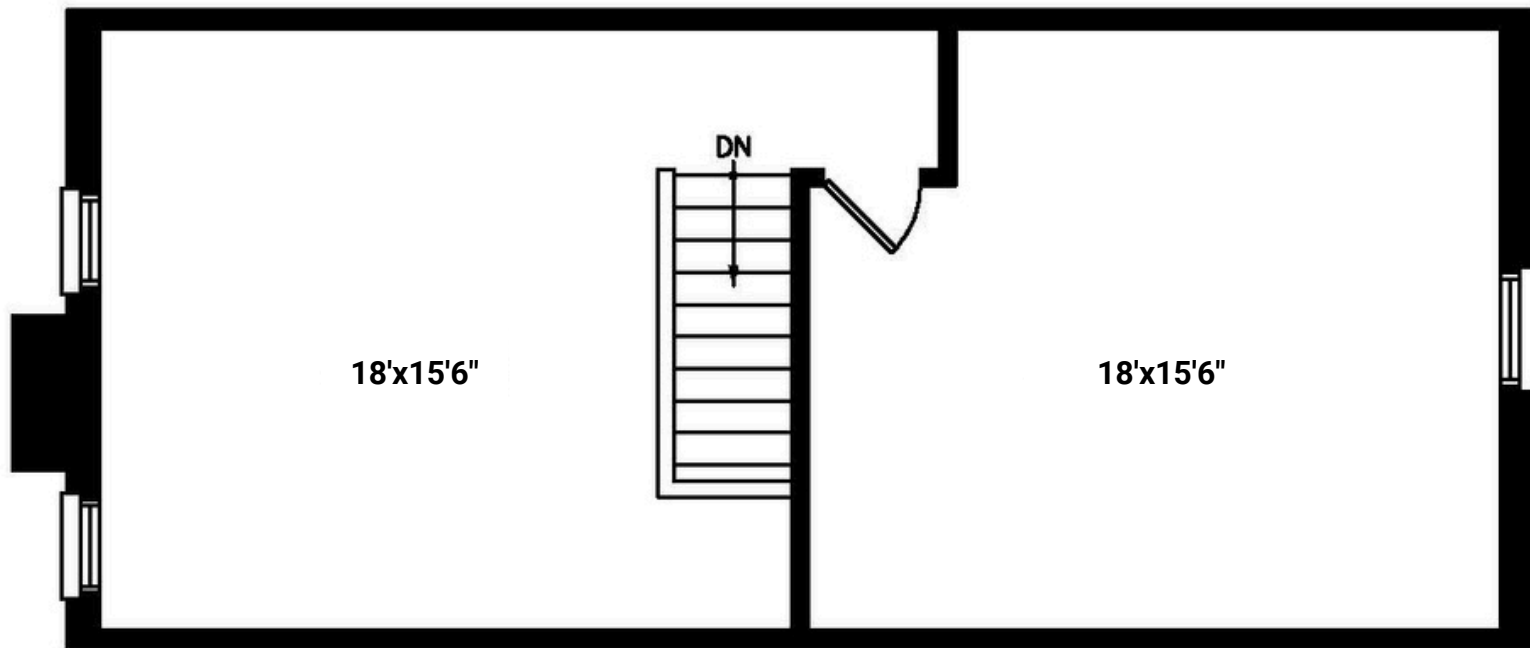
Note: Drawing is not to scale and for illustration purposes only - dimensions are approximate

**SECOND FLOOR**

614 & 612 W Patrick St  
Frederick, Maryland

FIRST FLOOR	=	1,170 SQ.FT.
SECOND FLOOR	=	985 SQ.FT.
THIRD FLOOR	=	605 SQ.FT.
BASEMENT	=	960 SQ.FT.
<b>TOTAL</b>	<b>=</b>	<b>3,720 SQ.FT.</b>



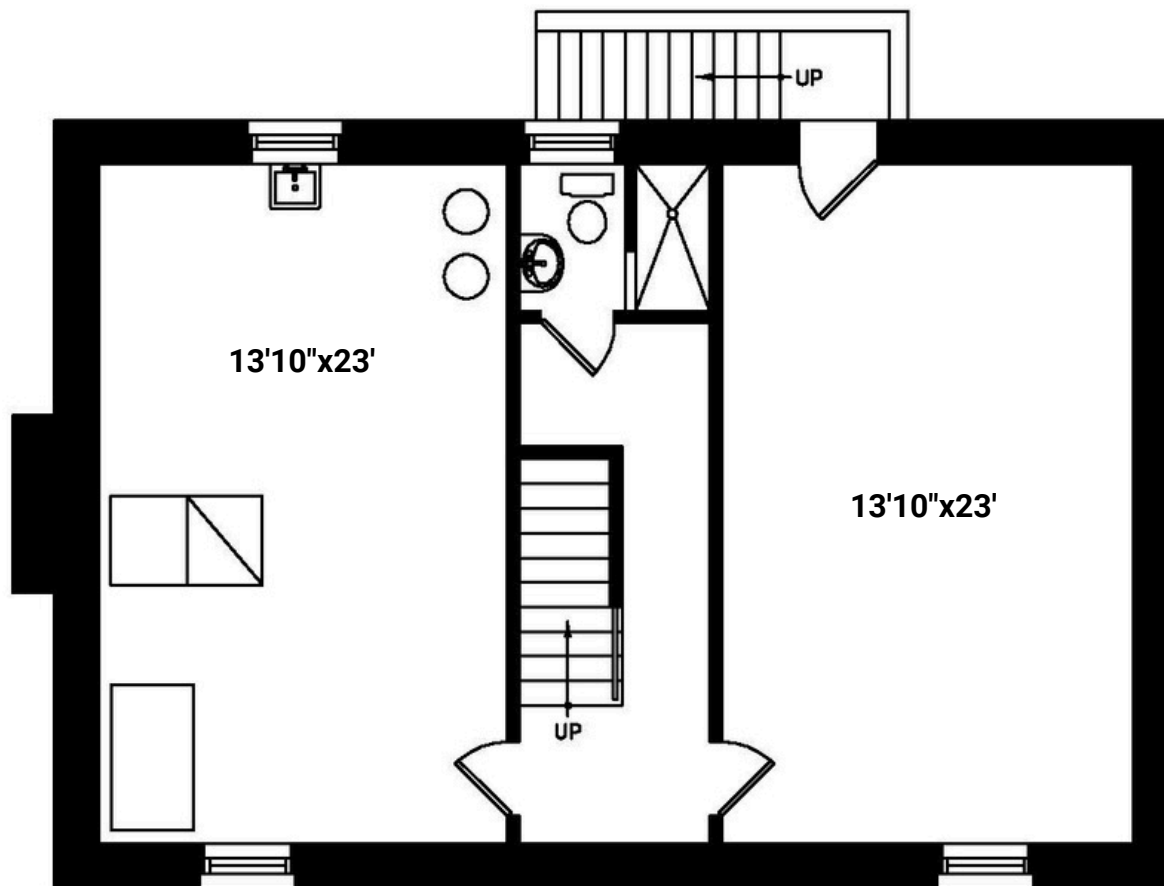


Note: Drawing is not to scale and for illustration purposes only - dimensions are approximate

**THIRD FLOOR**  
614 & 612 W Patrick St  
Frederick, Maryland

FIRST FLOOR	=	1,170 SQ.FT.
SECOND FLOOR	=	985 SQ.FT.
THIRD FLOOR	=	605 SQ.FT.
BASEMENT	=	960 SQ.FT.
<b>TOTAL</b>	<b>=</b>	<b>3,720 SQ.FT.</b>

**WARNER**  
COMMERCIAL



Note: Drawing is not to scale and for illustration purposes only - dimensions are approximate

**BASEMENT**

614 & 612 W Patrick St  
Frederick, Maryland

FIRST FLOOR	=	1,170 SQ.FT.
SECOND FLOOR	=	985 SQ.FT.
THIRD FLOOR	=	605 SQ.FT.
<b>BASEMENT</b>	=	<b>960 SQ.FT.</b>
<b>TOTAL</b>	=	<b>3,720 SQ.FT.</b>

**WARNER**  
COMMERCIAL